

Seahoss Farm



Property Features

Seahoss Farm, a 755+/- acre tract located in eastern Houston County, Alabama - a short 17 miles east of Dothan - strikes the perfect balance between timber, recreation, and conservation. Enjoyment of this special property is enhanced with the inclusion of several improvements – a comfortable furnished cabin, six-bay pole barn, three ponds, and numerous food plots that have been beautifully sculpted into the landscape.

Lying in the Lower Coast Plain region of Southern Alabama, Seahoss Farm has a gently rolling topography with soils that include sand, sandy loam, and sandy clay – all of which are productive for agriculture and forestry. Timber harvesting occurred during 2021 but there remains merchantable loblolly and slash pine stands that were planted from 1995 to 2005. Improved third generation containerized loblolly seedlings were planted on 250 acres in January 2022.

Hunting is an important part of the Seahoss Farm experience with most of the emphasis on cultivating a strong white tail deer population. Quality Deer Management practices are in place to improve genetics and achieve a proper distribution between bucks and does. Turkeys are also very plentiful at Seahoss Farm with

At a Glance:

Acreage:

755± acres

Asking Price:

\$1,963 per acre

Location:

Houston County, Alabama

Special Attributes:

- Good Timber Tract
- Recreational Opportunities
- Conservation Protection
- Cabin, Pole Barn, 3 Ponds
- 17 Miles East of Dothan
- 2 Miles Paved Road Frontage

Arnie Rogers, Licensed Real Estate Broker

Verdura Realty, LLC • 254 East 6th Avenue • Tallahassee, FL 32303

Cell: 850.491.3288 • Email: arogers@verduraproperties.com

www.VerduraProperties.com



Seahoss Farm

Property Features *continued*

ideal roosting areas within the hardwood swamp areas. Special plant communities found in this region are dunes, pine flatwoods, and cypress swamps that provide an ideal habitat for game and non-game mammals, amphibians, and reptiles as well as important nesting sites for several species of neotropical migrant songbirds, birds of prey, and various game birds. Some are rare and threatened species. The wetlands and swamps found on Seahoss Farm are part of the larger Turnpike Swamp located in the northwest part of the property. Seahoss Farm is also positioned five miles west of the Chattahoochee River and serves as an integral component of the Chattahoochee-Chipola River watershed.

Because of the importance of protecting the natural habitat that exists at Seahoss Farm, a conservation easement was placed on the property with the Georgia - Alabama Land Trust. With this designation, silviculture is still allowed with constraints primarily relating to the development of the property.

Access to Seahoss Farm makes it even more desirable and valuable as an investment. Situated just 1.5 miles south of U.S. Highway 84, the property has an outstanding internal road system and almost two miles of paved road frontage on Springhill Church Road, Paul Jeffcoat Road, and County Road 8.

At a Glance:

Acreage:
755± acres

Asking Price:
\$1,963 per acre

Location:
Houston County, Alabama

Special Attributes:

- Good Timber Tract
- Recreational Opportunities
- Conservation Protection
- Cabin, Pole Barn, 3 Ponds
- 17 Miles East of Dothan
- 2 Miles Paved Road Frontage



Arnie Rogers, *Licensed Real Estate Broker*
Verdura Realty, LLC • 254 East 6th Avenue • Tallahassee, FL 32303
Cell: 850.491.3288 • Email: arogers@verduraproperties.com
www.VerduraProperties.com



Seahoss Farm

Photos



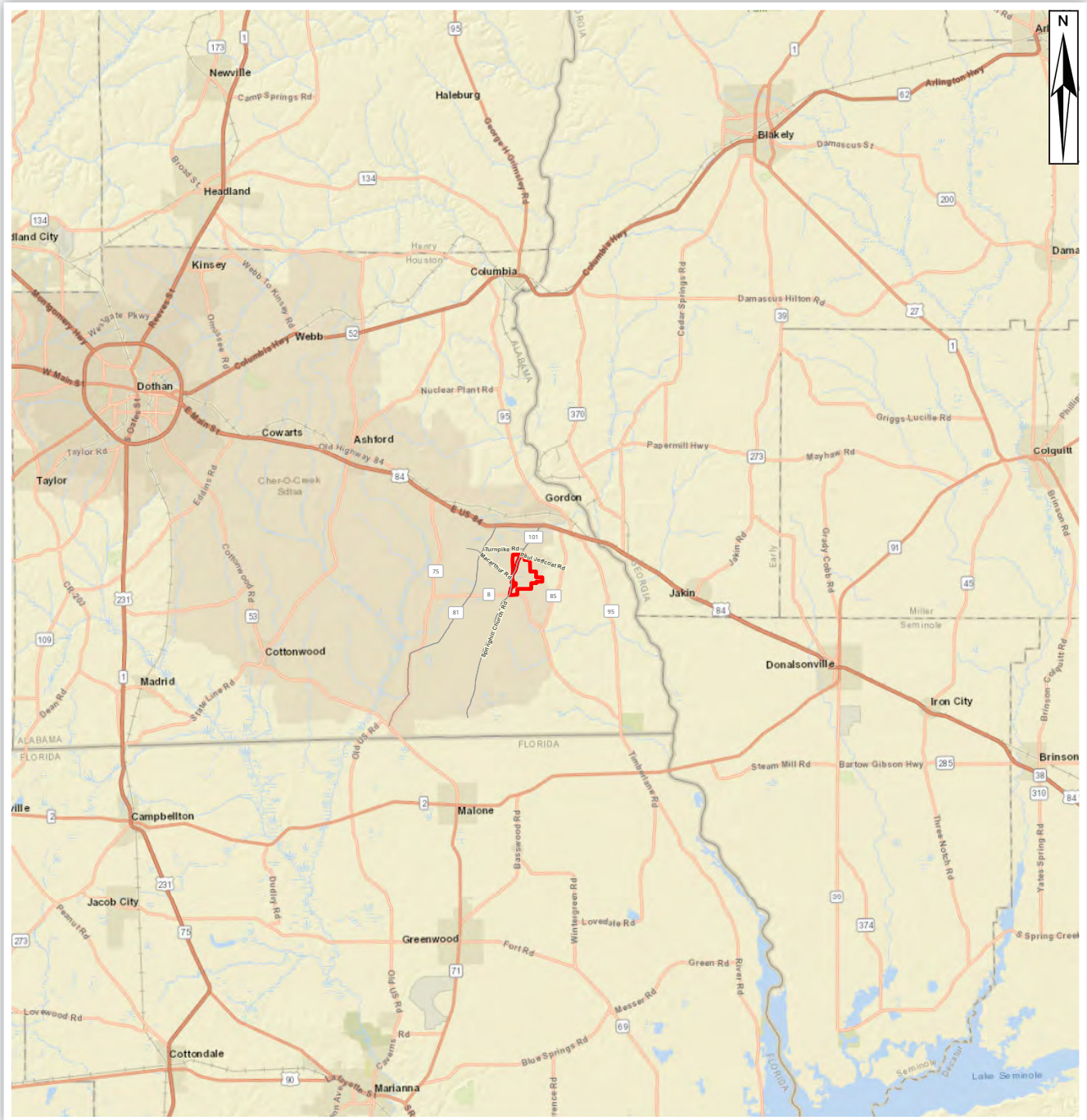
Arnie Rogers, Licensed Real Estate Broker
Verdura Realty, LLC • 254 East 6th Avenue • Tallahassee, FL 32303
Cell: 850.491.3288 • Email: arogers@verduraproperties.com
www.VerduraProperties.com



Please note that while all information is believed to be reliable, none is guaranteed.

Seahoss Farm

Location Map



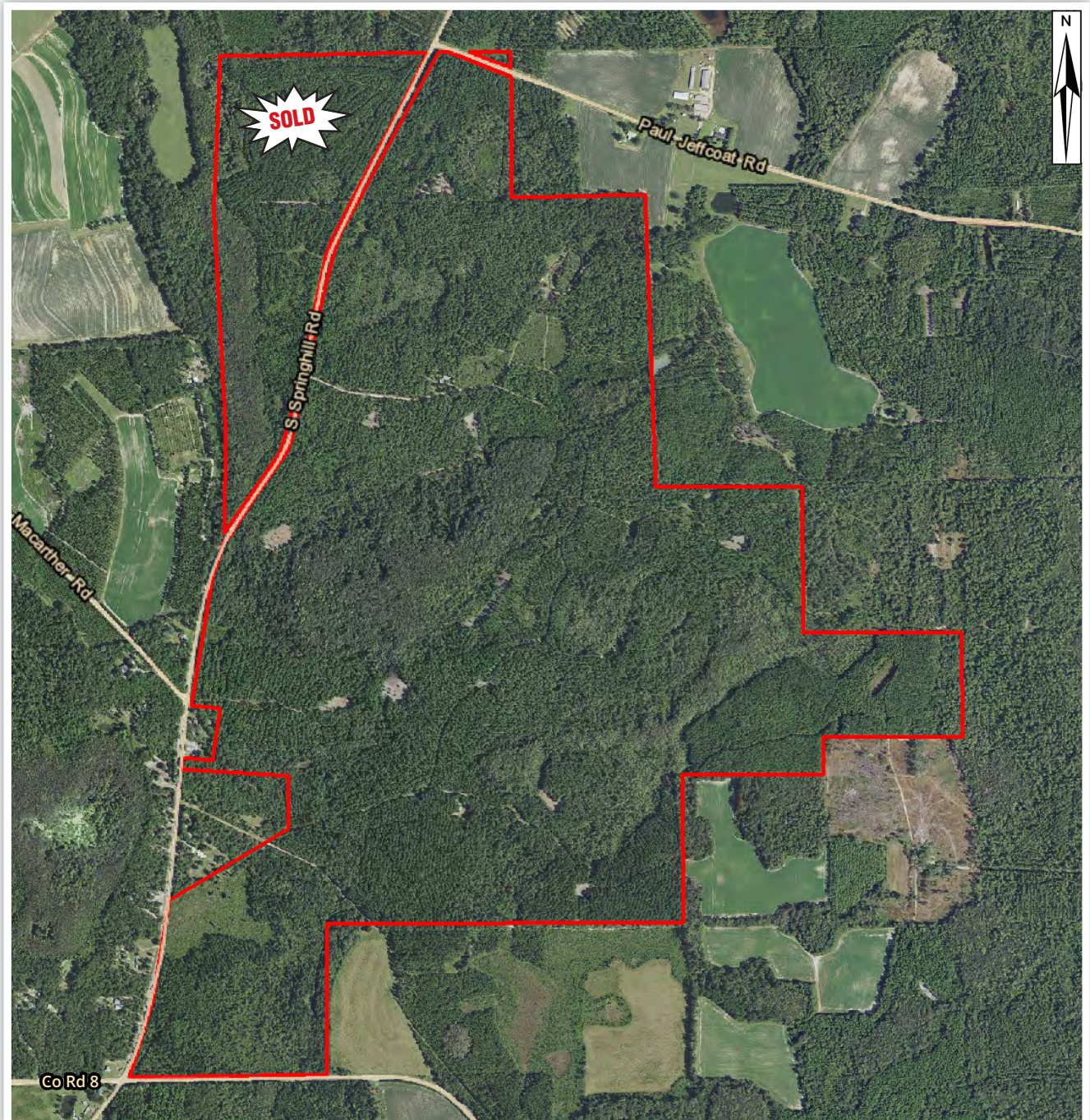
Arnie Rogers, Licensed Real Estate Broker
Verdura Realty, LLC • 254 East 6th Avenue • Tallahassee, FL 32303
Cell: 850.491.3288 • Email: arogers@verduraproperties.com
www.VerduraProperties.com



Please note that while all information is believed to be reliable, none is guaranteed.

Seahoss Farm

Aerial Map



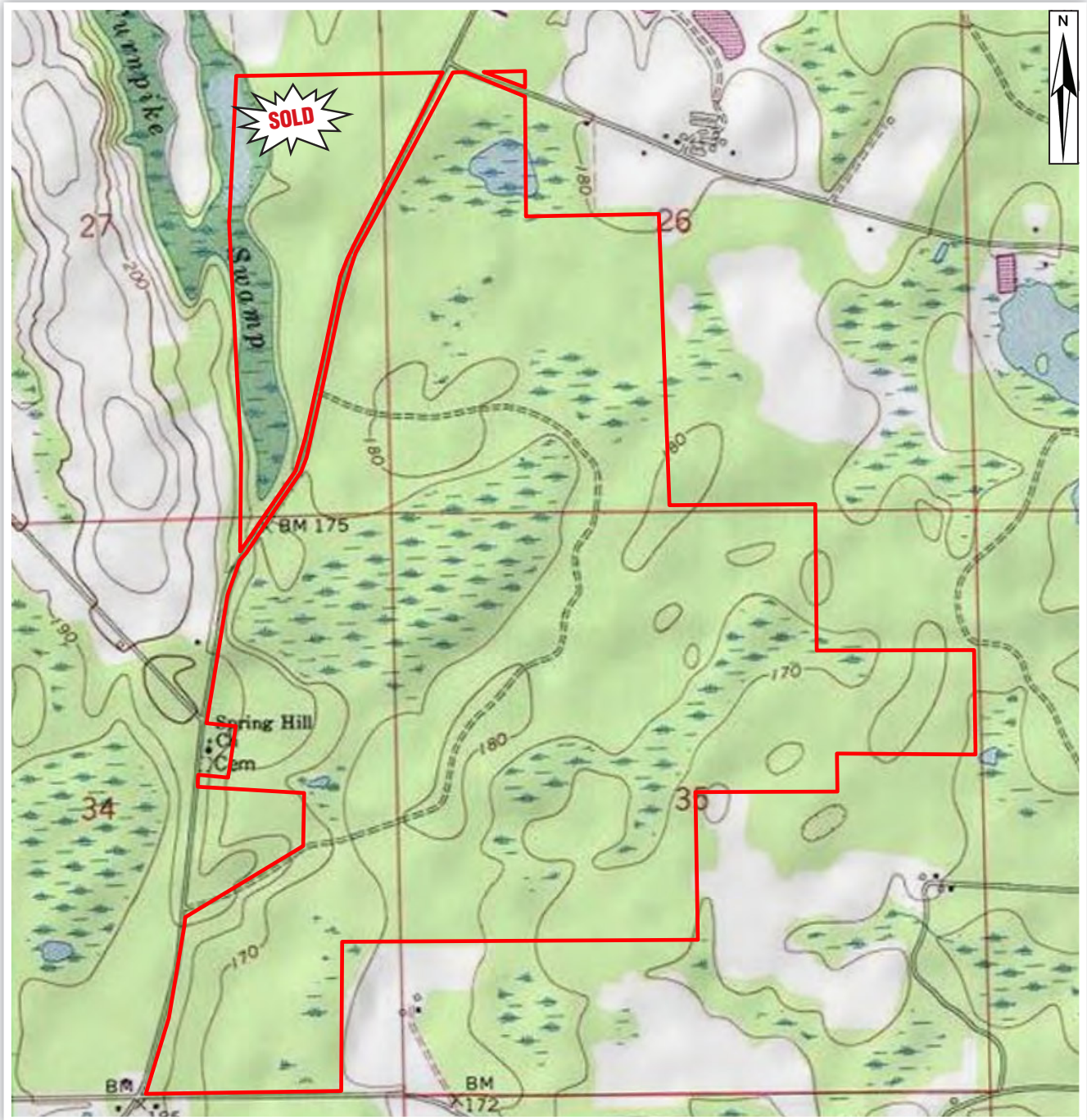
Arnie Rogers, *Licensed Real Estate Broker*
Verdura Realty, LLC • 254 East 6th Avenue • Tallahassee, FL 32303
Cell: 850.491.3288 • Email: arogers@verduraproperties.com
www.VerduraProperties.com



Please note that while all information is believed to be reliable, none is guaranteed.

Seahoss Farm

Topo Map



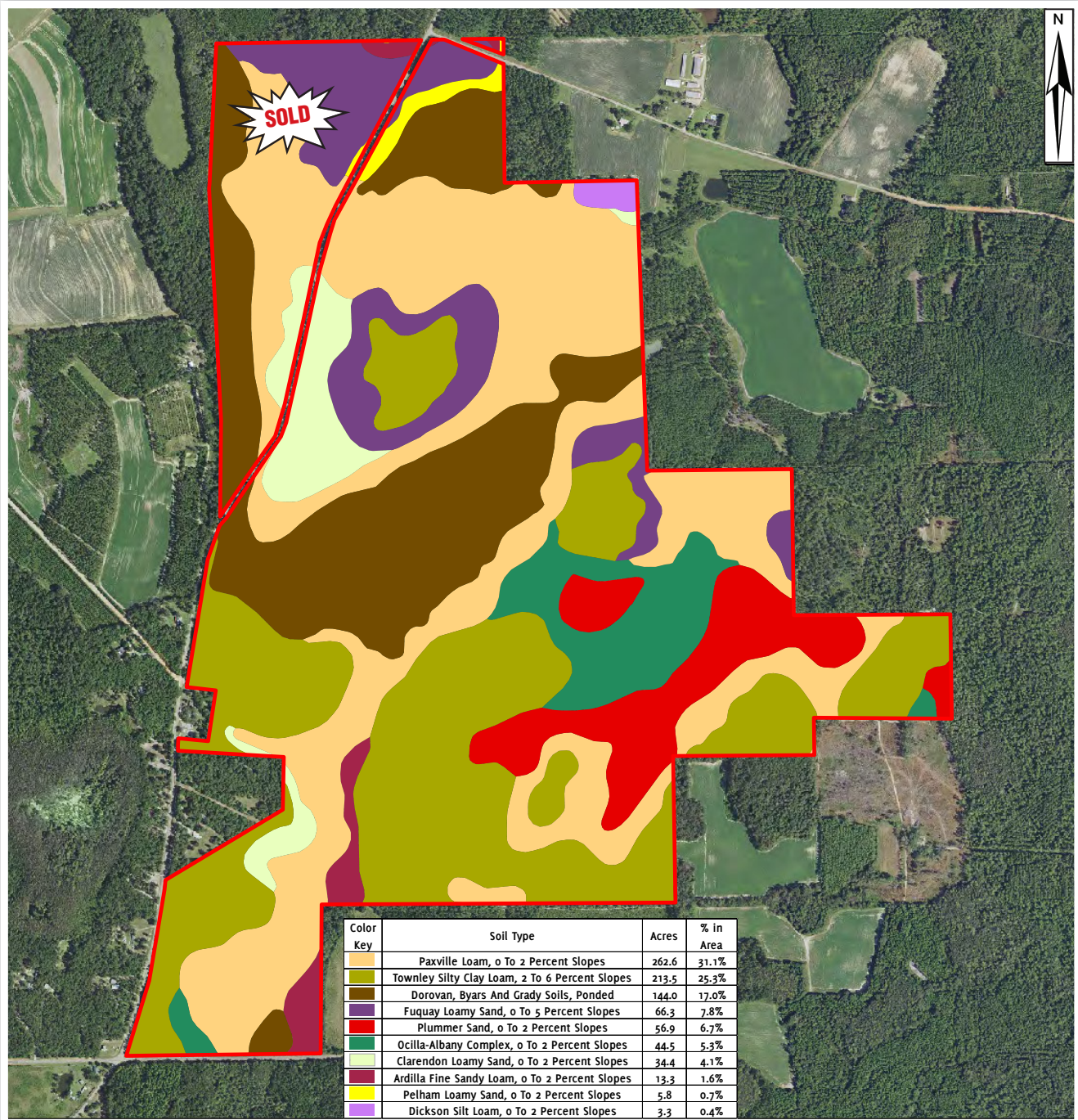
Arnie Rogers, Licensed Real Estate Broker
Verdura Realty, LLC • 254 East 6th Avenue • Tallahassee, FL 32303
Cell: 850.491.3288 • Email: arogers@verduraproperties.com
www.VerduraProperties.com



Please note that while all information is believed to be reliable, none is guaranteed.

Seahoss Farm

Soil Map



Arnie Rogers, Licensed Real Estate Broker
 Verdura Realty, LLC • 254 East 6th Avenue • Tallahassee, FL 32303
 Cell: 850.491.3288 • Email: arogers@verduraproperties.com
www.VerduraProperties.com



Please note that while all information is believed to be reliable, none is guaranteed.